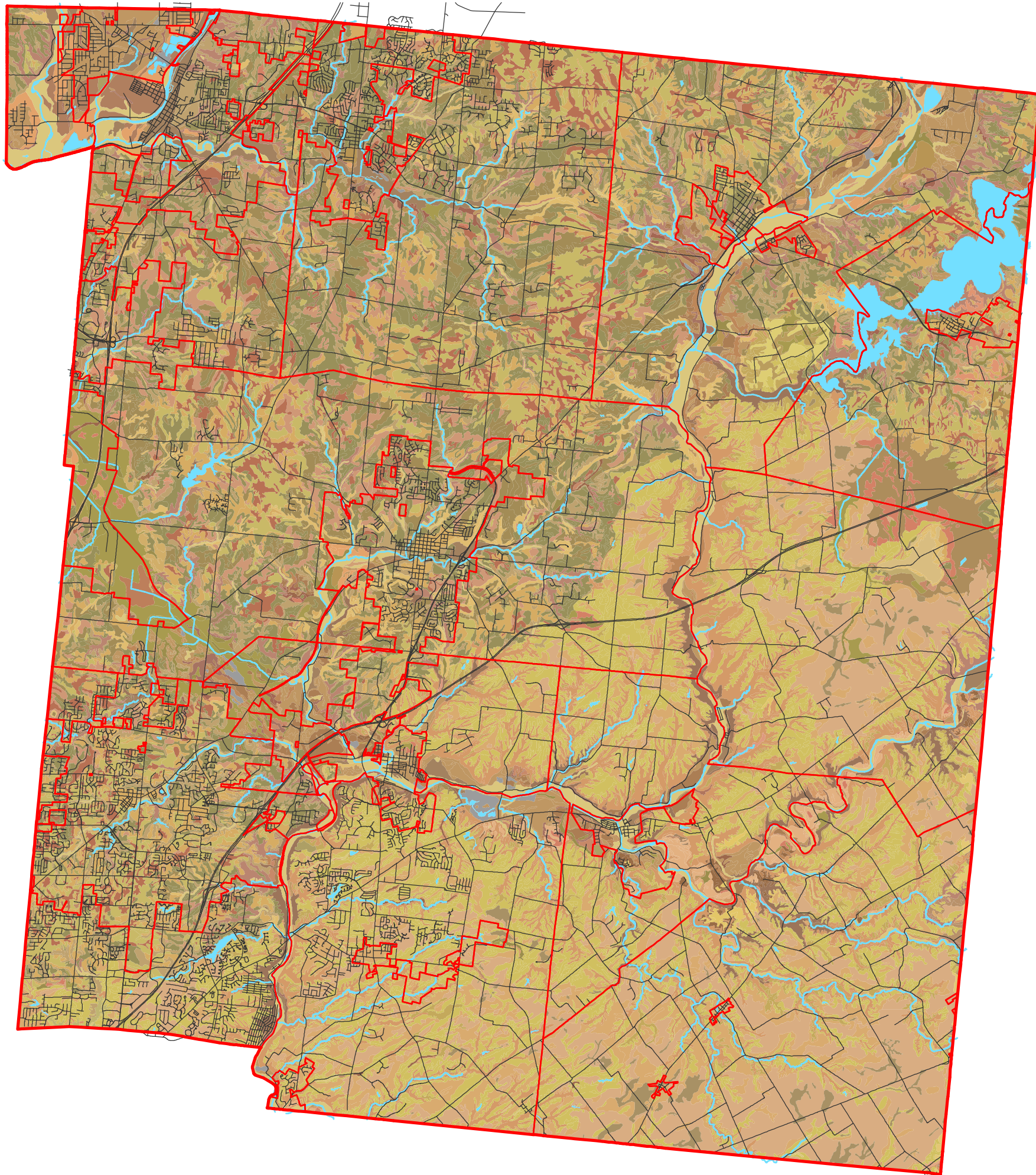


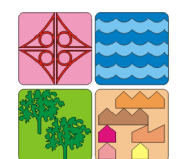
Map 2

Warren County Soils Classifications Map



- | | | | | | |
|--|-------------------|--|---------------------|--|------------------|
| | Abscota | | Hennepin | | Rodman |
| | Alford | | Henshaw | | Ross |
| | Algiers | | Hickory | | Rossmoyne |
| | Avonburg | | Iva | | Russell |
| | Birkbeck | | Jonesboro-Rossmoyne | | Secondcreek |
| | Blanchester | | Kendallville | | Shoals |
| | Bonnell | | Kings | | Sligo |
| | Brookston | | Lanier | | Sloan |
| | Casco | | Libre | | Stonelick |
| | Cincinnati | | Loudon | | Stringley-Sligo |
| | Clermont | | Lumberton | | Treaty |
| | Crouse-Miamin | | Miamian | | Udorthents |
| | Crider | | Muck | | Uniontown |
| | Cut and Fill Land | | Ockley | | Water |
| | Dana | | Parke | | Warsaw |
| | Eden | | Patton | | Wapahani-Miamian |
| | Eel | | Platville | | Wea |
| | Fairmount-Eden | | Princeton | | Westboro |
| | Fincastle | | Ragsdale | | Williamsburg |
| | Fox | | Rainsboro | | Wynn |
| | Genesee | | Reesville | | Xenia |
| | Gravel Pits | | Riverwash | | |

- County Boundary
- Local Jurisdictions
- Public Roads
- Lakes & Ponds
- Rivers, Creeks & Streams



0 6,000 12,000 24,000 36,000 48,000 Feet

Scale: 1 Inch = 12,000 Feet

