



**BOARD OF COUNTY COMMISSIONERS
WARREN COUNTY, OHIO**

406 Justice Drive, Lebanon, Ohio 45036

www.co.warren.oh.us

commissioners@co.warren.oh.us

Telephone (513) 695-1250

Facsimile (513) 695-2054

**TOM GROSSMANN
SHANNON JONES
DAVID G. YOUNG**

BOARD OF COUNTY COMMISSIONERS
WARREN COUNTY, OHIO

MINUTES: Regular Session – August 9, 2022

This is a summary of actions and discussions of the meeting. You may view this meeting through our YouTube Channel at <https://www.youtube.com/channel/UC1ELh0jGpXd4VV2DTgsuqPA> or by contacting our office.

The Board met in regular session pursuant to adjournment of the August 2, 2022, meeting.

Tom Grossmann – present

David G. Young – present

Shannon Jones – present

Tina Osborne, Clerk – present

Minutes of the August 2, 2022, meeting were read and approved.

- 22-1188 A resolution was adopted to accept resignation of Lauren Cavanaugh, Director, within Warren County Job and Family Services, Human Services Division, effective September 9, 2022. Vote: Unanimous
- 22-1189 A resolution was adopted to accept resignation of Rachel Overman, Emergency Communications Operator, within the Warren County Emergency Services Department, effective July 29, 2022. Vote: Unanimous
- 22-1190 A resolution was adopted to accept resignation of Brendan Czinege, Water Distribution Worker III, within the Warren County Water and Sewer Department, effective August 10, 2022. Vote: Unanimous
- 22-1191 A resolution was adopted to approve promotion of Dara Geiger to the position of Adoption Supervisor, within the Warren County Department of Job and Family Services, Children Services Division. Vote: Unanimous
- 22-1192 A resolution was adopted to authorize the posting of the “Adoption Caseworker” position, within the Warren County Department of Job and Family Services, Children Services Division, in accordance with Warren County Personnel Policy Manual, Section 2.02 (A). Vote: Unanimous

- 22-1193 A resolution was adopted to approve end of 365- day probationary period and approve a pay increase for Renee Hathaway within the Warren County Department of Job and Family Services, Children Services Division. Vote: Unanimous
- 22-1194 A resolution was adopted to hire Steve Scott as Plans Examiner within the Warren County Building and Zoning Department. Vote: Unanimous
- 22-1195 A resolution was adopted to approve promotion of Alden Payzant from Building and Electrical Inspector III to Residential Building Official within the Building and Zoning Department. Vote: Unanimous
- 22-1196 A resolution was adopted to amend Resolution #22-0980 approving the hire of Lisa Hicks as Community Manager within Warren County Telecommunications Department. Vote: Unanimous
- 22-1197 A resolution was adopted to amend Resolution #22-1108 approving the hire of Seth Sandlin as Custodial Worker I within Warren County Facilities Management. Vote: Unanimous
- 22-1198 A resolution was adopted to rescind Resolution #22-1073 which authorized the hiring of Jennifer Wilson, Water and Sewer Utility Clerk, within the Warren County Water and Sewer Department. Vote: Unanimous
- 22-1199 A resolution was adopted to cancel regularly scheduled Commissioners' Meeting of Thursday, August 11, 2022. Vote: Unanimous
- 22-1200 A resolution was adopted to authorize Request for Proposals for Garage Fleet Management System with Implementation Services for the Warren County Garage. Vote: Unanimous
- 22-1201 A resolution was adopted to authorize President of the Board to sign permit application from the Ohio Department of Commerce, Division of Liquor Control for a fundraising event at the Warren County Fairgrounds. Vote: Unanimous
- 22-1202 A resolution was adopted to approve and authorize the President of the Board to execute a memorandum of understanding with the Supreme Court of Ohio on behalf of the Warren County Juvenile Court. Vote: Unanimous
- 22-1203 A resolution was adopted to enter into an agreement with Climate Conditioning Company, Inc. on behalf of Warren County Telecommunications. Vote: Unanimous
- 22-1204 A resolution was adopted to authorize acceptance of quote from Central Square on behalf of Warren County Telecommunications for professional services bundle including ANI-ALI interface to be reparsed listed on the attached quote Q-106160. Vote: Unanimous

- 22-1205 A resolution was adopted to authorize President of Board to sign the Task Completion Report #1, Sales order Q-95691 for Central Square Technologies (FKA Tritech Software Systems) on behalf of Warren County Telecommunications. Vote: Unanimous
- 22-1206 A resolution was adopted to enter into an agreement with Buckeye Power Sales Co. Inc. on behalf of Warren County Telecommunications. Vote: Unanimous
- 22-1207 A resolution was adopted to enter into contract with Moody's of Dayton Inc. for the 2022 Well Redevelopment Project Rebid. Vote: Unanimous
- 22-1208 A resolution was adopted to enter into contract with Majors Enterprises Inc. for the Kings Mills Road Relief Sewer Project. Vote: Unanimous
- 22-1209 A resolution was adopted to acknowledge payment of bills. Vote: Unanimous
- 22-1210 A resolution was adopted to acknowledge receipt of July 2022 financial statement. Vote: Unanimous
- 22-1211 A resolution was adopted to approve a street and appurtenances (including sidewalks) bond release for Wilson Farms Development, LLC for completion of improvements in Wilson Farms, Section Four, Block "B" situated in Franklin Township. Vote: Unanimous
- 22-1212 A resolution was adopted to approve Madison Grace Way in Wilson Farms, Section Four, Block "B" for public maintenance by Franklin Township. Vote: Unanimous
- 22-1213 A resolution was adopted to approve operational transfer from County Commissioners' Fund #11011112 into Mary Haven Youth Treatment Center Fund #2270. Vote: Unanimous
- 22-1214 A resolution was adopted to approve supplemental appropriation into Domestic Relations Fund #11011230. Vote: Unanimous
- 22-1215 A resolution was adopted to approve supplemental appropriations into Workforce Investment Fund #2238. Vote: Unanimous
- 22-1216 A resolution was adopted to approve supplemental appropriation into Common Please Special Projects #2224. Vote: Unanimous
- 22-1217 A resolution was adopted to approve supplemental appropriation into Warren County Common Pleas Court Community Based Corrections #2289. Vote: Unanimous
- 22-1218 A resolution was adopted to approve supplemental appropriation into Warren County Common Pleas Court Community Based Corrections #2289. Vote: Unanimous

- 22-1219 A resolution was adopted to approve supplemental appropriation into Sheriff's Office Fund #2295. Vote: Unanimous
- 22-1220 A resolution was adopted to approve appropriation adjustment within OMB Fund #11011115. Vote: Unanimous
- 22-1221 A resolution was adopted to approve appropriation adjustment within Prosecutor Fund #11011150. Vote: Unanimous
- 22-1222 A resolution was adopted to approve appropriation adjustment within Common Pleas Court Fund #11011220. Vote: Unanimous
- 22-1223 A resolution was adopted to approve appropriation adjustments within Sheriff's Office Funds #11012200 and #11012210. Vote: Unanimous
- 22-1224 A resolution was adopted to approve appropriation adjustments within Law Library Resources Fund #2207. Vote: Unanimous
- 22-1225 A resolution was adopted to approve appropriation adjustment within Law Library Resources Fund #2207. Vote: Unanimous
- 22-1226 A resolution was adopted to approve appropriation adjustment into Fiscal Recovery Fund #2211. Vote: Unanimous
- 22-1227 A resolution was adopted to approve requisitions and authorize County Administrator to sign documents relative thereto. Vote: Unanimous
- 22-1228 A resolution was adopted to authorize Request for Proposals for Tax Bill Printing and Mailing Services for the Warren County Treasurer. Vote: Unanimous
- 22-1229 A resolution was adopted to approve the request from the County Engineer's Office allowing departures from the Warren County Official Thoroughfare Plan. Vote: Unanimous

DISCUSSIONS

On motion, upon unanimous call of the roll, the Board accepted and approved the consent agenda.

Barney Wright, Warren County Treasurer, was present along with James Spaeth, Clerk of Courts, for a meeting of the Warren County Investment Advisory Board.

Mr. Wright presented the attached information relative to investments as of June 30, 2022.

Mr. Wright then discussed the situation with the vendor relative to the printing of tax bills and requested the Board approve the issuance of a Request for Proposals in search of a new vendor.

Upon discussion, the Board resolved (Resolution #22-1228) to authorize Request for Proposals for Tax Bill Printing and Mailing Services for the Warren County Treasurer.

PUBLIC HEARING
CONSIDER REQUEST OF THE COUNTY ENGINEER TO DEVIATE FROM THE
WARREN COUNTY OFFICIAL THOROUGHFARE PLAN RELATIVE TO GRANDIN
ROAD IN HAMILTON TOWNSHIP

The Board met this 9th day of August 2022, for the public hearing to consider the request of the County Engineer to deviate from the Warren County Official Thoroughfare Plan relative to the proposed Kroger development on SR 48 in Hamilton Township.

Tina Osborne, Clerk of Commissioners confirmed that the date, time and location of the hearing was advertised in a newspaper of general circulation in the County at least 10 days prior to the hearing and notice was sent to all adjacent property owners within 500 feet of the property, that the Board was considering the request of the County Engineer to depart from the County's Official Thoroughfare Plan relating to the Grandin Road Extension to Town Center Boulevard due to the results of a Traffic Impact Study ("TIS") indicating such connection would create traffic issues at the intersection of Grandin Road and State Route 48; in contrast, the TIS indicates traffic will flow and operate better by terminating Grandin Road into the proposed Kroger Store development on parcels 16-06-400-014, 16-06-400-017, 16-06-400-018, 16-05-226-001-1&2 on the east side of State Route 48, in Hamilton Township.

Neil Tunison, County Engineer, reviewed the location of the proposed development as well as the attached maps showing the Grandin Road extension and stated that eliminating this segment of the Grandin Road extension places additional emphasis on the need for the proposed extension of Towne Center Boulevard east of SR 48 toward US 22/3. He then stated he is agreement with the deviation from the Thoroughfare Plan as long as the Developer of the proposed Kroger Store is required to: i) construct the Towne Center Boulevard Extension approximately 1000-Linear Feet east of SR 48 to just beyond the east-most access proposed for the development, and ii) dedicate the public road right-of-way with access easements to the east property line for the development as provided in the Hoptown 2010 Plan. He stated that if those conditions are met, it would eliminate congestion in the area.

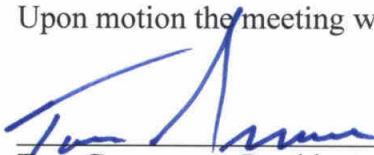
Bruce McGary, Assistant Prosecutor, informed the Board that a unanimous vote is required in order to deviate from the Official Thoroughfare Plan.

Jeff Eichhorn, Henkle Schueler Group, spoke on behalf of the developer of the Kroger site, stating this deviation is needed to proceed with the development. He then stated his belief that the requested right-of-way dedication works but they are still evaluating all of the information. He then stated they are looking to close on the property in February 2023.

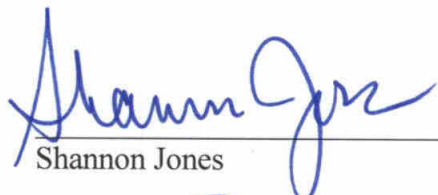
Upon further discussion, the public hearing was closed, and the Board resolved (Resolution #22-1229) to deviate from the Official Thoroughfare Plan allowing the termination of Grandin Road Extension into the proposed Kroger Store development subject to the conditions requested by the County Engineer.

On motion, upon unanimous call of the roll, the Board entered executive session at 9:28 a.m. to discuss personnel matters relative to employment within Human Services pursuant to Ohio Revised Code Section 121.22 (G)(1) and pending litigation with legal counsel present pursuant to Ohio Revised Code Section 121.22 (G)(3) and exited at 10:42 a.m.

Upon motion the meeting was adjourned.



Tom Grossmann, President




Shannon Jones



David G. Young

I hereby certify that the foregoing is a true and correct copy of the minutes of the meeting of the Board of County Commissioners held on August 9, 2022, in compliance with Section 121.22 O.R.C.



Tina Osborne, Clerk
Board of County Commissioners
Warren County, Ohio



JUNE 30, 2022

Warren County Investment Strategy Update

PREPARED BY: JIM MCCOURT, CFA



MEEDER
PUBLIC FUNDS



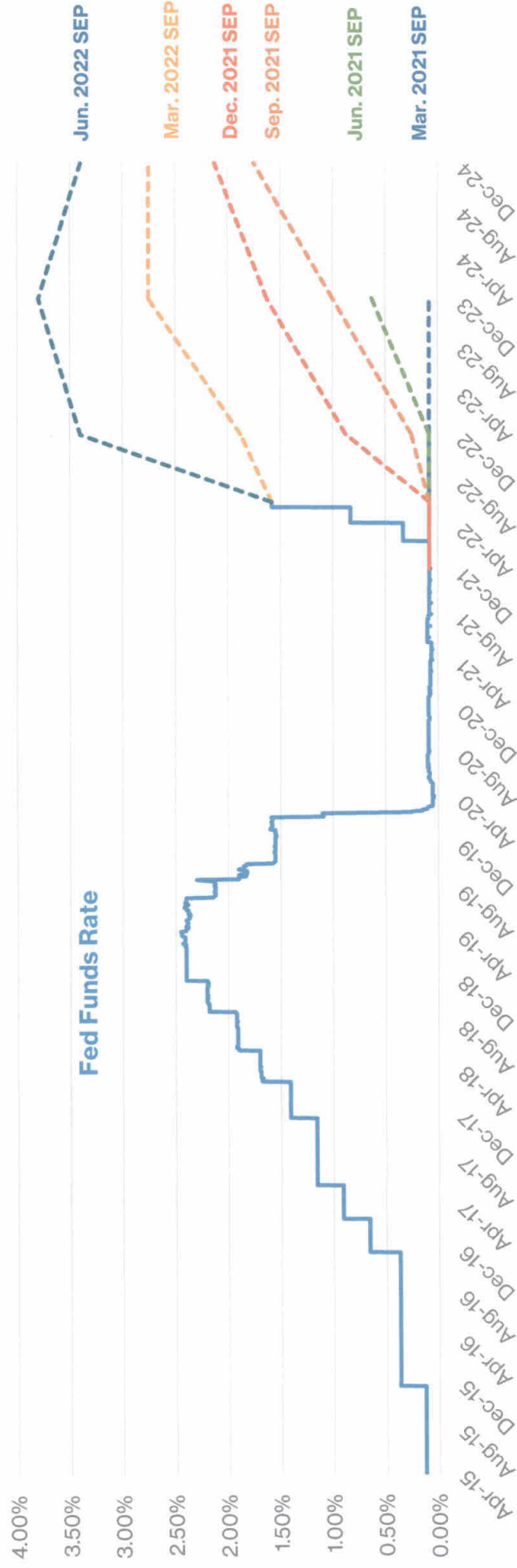
M E E D E R
PUBLIC FUNDS

ECONOMIC UPDATE

Fed's Evolving Rate Plans

Fed's Rate Outlook Evolved Amid Persistent Inflation Pressures And A Faster Decline In Unemployment

Fed Rate Projections (Median) By Meeting



SOURCE: FEDERAL RESERVE

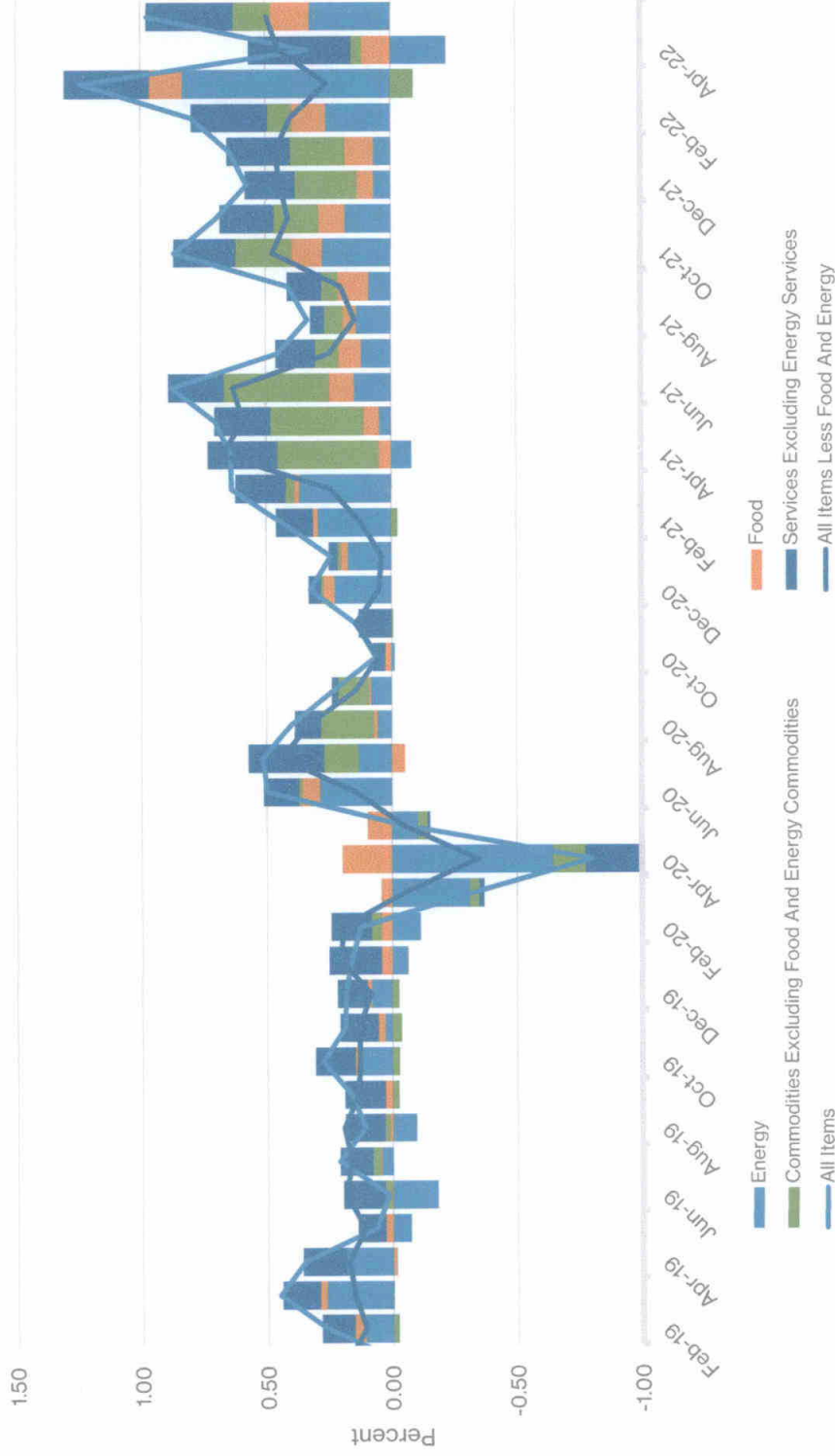
FOR INFORMATIONAL PURPOSES ONLY. SEE IMPORTANT DISCLOSURES AT THE END OF THE PRESENTATION.

FEDERAL RESERVE EXPECTATIONS SUMMARY OF ECONOMIC PROJECTIONS

		2022	2023	2024	LONGER RUN
REAL GDP	JUN 22	1.7%	1.7%	1.9%	1.8%
	MAR 22	2.8%	2.2%	2.0%	1.8%
UNEMPLOYMENT RATE	JUN 22	3.7%	3.9%	4.1%	4.0%
	MAR 22	3.5%	3.5%	3.6%	4.0%
CORE PCE	JUN 22	4.3%	2.7%	2.3%	
	MAR 22	4.1%	2.6%	2.3%	
FED FUNDS RATE	JUN 22	3.4%	3.8%	3.4%	2.5%
	MAR 22	1.9%	2.8%	2.8%	2.4%

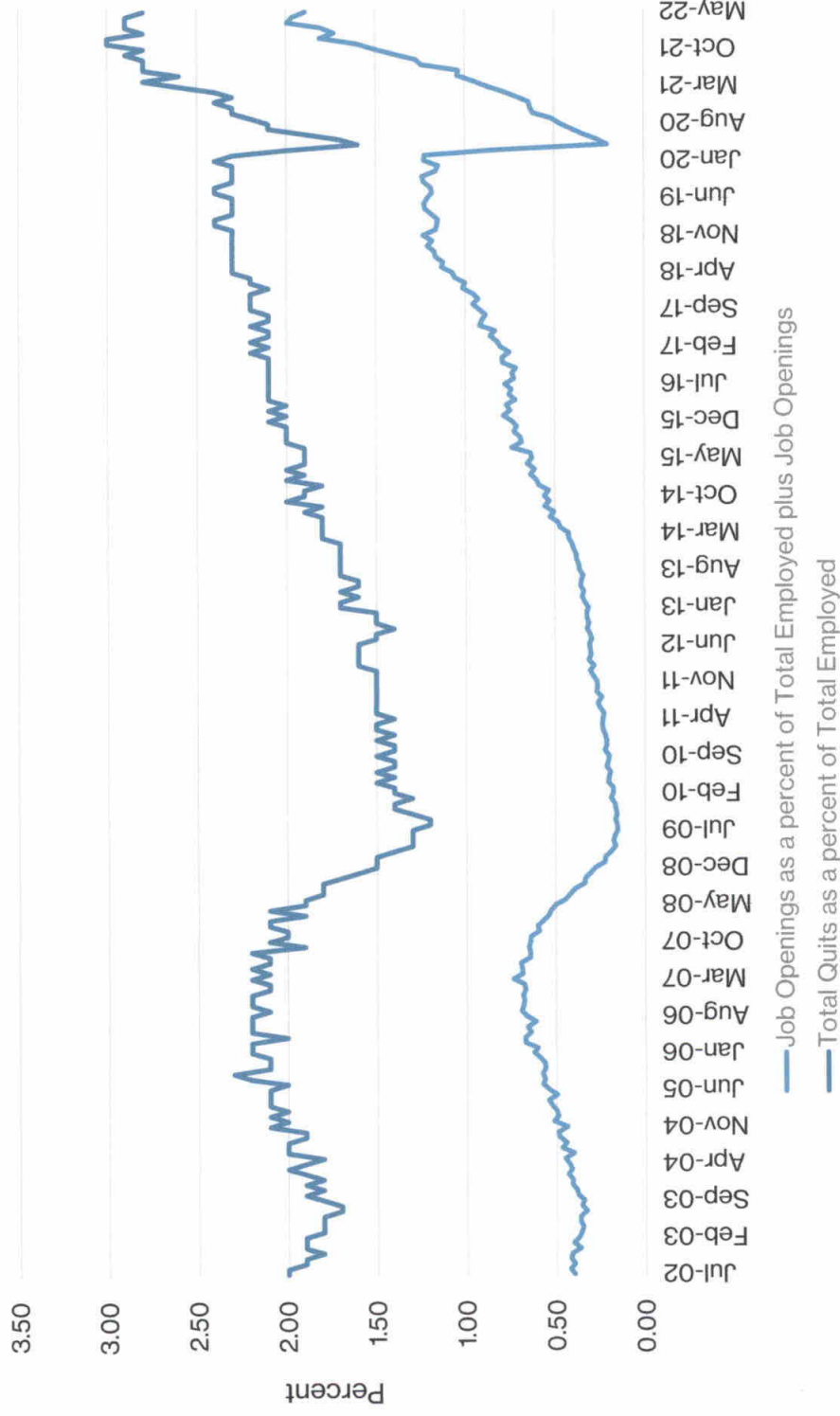
INFLATION REMAINS ELEVATED

Consumer Price Index (CPI) Month over Month



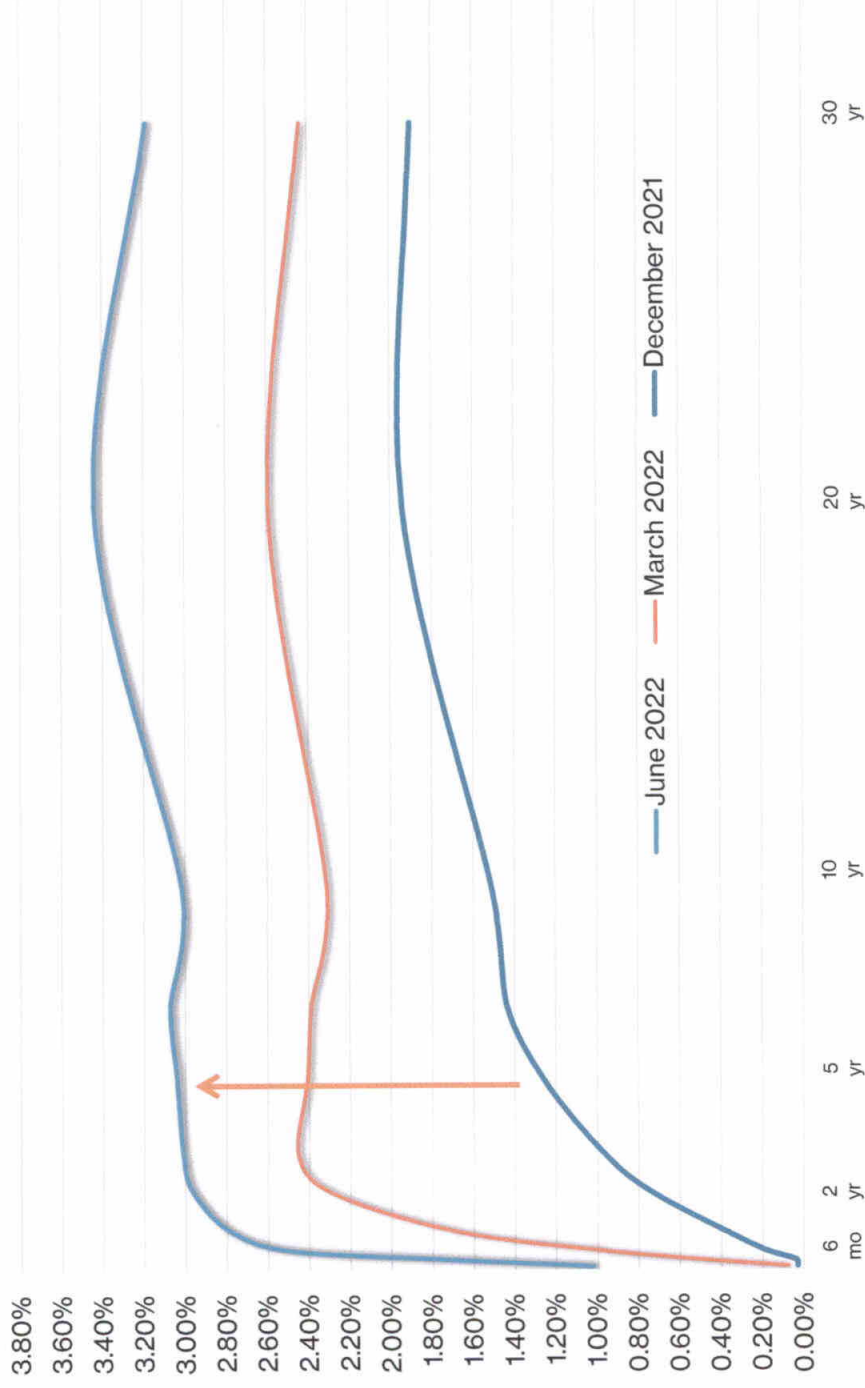
- Year over year Consumer price index stood at 8.6% in May with the core excluding volatile food and energy at 6.0%
- Fed's preferred measure of inflation, PCE index registered 6.3% with the core measure at 4.7%
- Fed highly attentive to inflation risks

LABOR MARKET REMAINS TIGHT



- Job openings far exceed the number of unemployed workers by a ratio of almost 2 to 1
- Employers saw record levels of job openings and workers quitting in March, followed by a minor drop in April and May
- Labor-market tightness could put pressure on higher wages

US TREASURY YIELD CURVES



- Yield curve reflects Fed's guidance on faster pace of rate hikes
- Shape of the curve has flattened due to increased risk of recession
- Yield curve inversion starting to set in as 2-year and 10-year spreads narrowing



MEEDER
PUBLIC FUNDS

PORTFOLIO REVIEW

Current Portfolio

Warren County Operating portfolio as of 6/30/2022

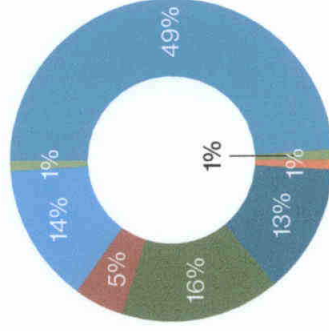
Your Portfolio

Cash (STAR Ohio) \$76,040,294
 Securities Book Value \$377,516,007
 Total Portfolio \$453,556,301

Your Securities

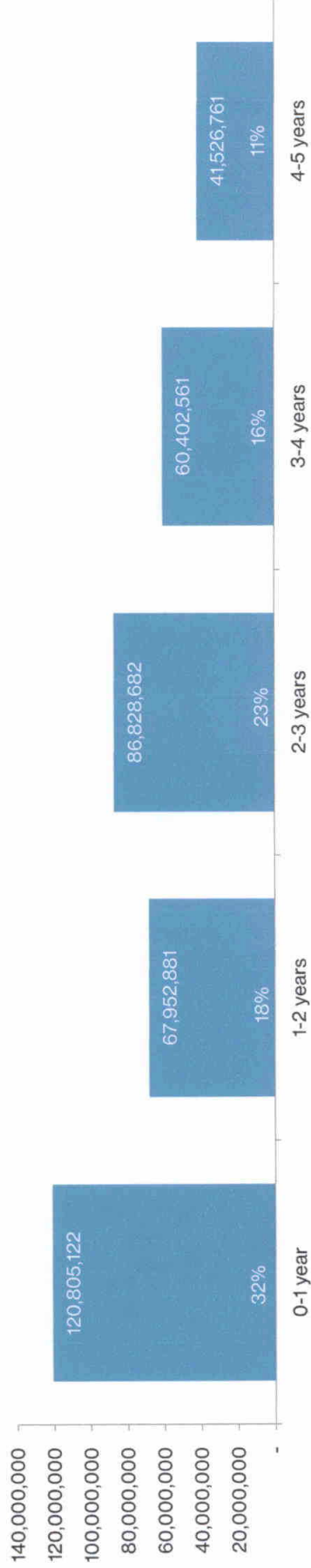
Weighted Average Maturity 2.04 years
 Weighted Average Yield 1.04%

Your Asset Allocation



- US Government Agencies
- FDIC-Insured Products
- Collateralized CDs
- Commercial Paper
- US Treasuries
- Municipal Bonds
- Corporate Bonds
- Foreign Government Bonds

Your Maturity Distribution



YIELD AND INTEREST INCOME INFORMATION IS ANNUALIZED. ALL YIELD INFORMATION IS SHOWN GROSS OF ANY ADVISORY AND CUSTODY FEES AND IS BASED ON YIELD TO MATURITY AT COST. PAST PERFORMANCE IS NOT A GUARANTEE OF FUTURE RESULTS.



Meeder Public Funds, Inc. is a registered investment adviser with the Securities and Exchange Commission (SEC) under the Investment Advisers Act of 1940. Registration with the SEC does not imply a certain level of skill or training. The opinions expressed in this presentation are those of Meeder Public Funds, Inc. The material presented has been derived from sources considered to be reliable, but the accuracy and completeness cannot be guaranteed.

Past performance does not guarantee future results. Opinions and forecasts are all subject to change at any time, based on market and other conditions, and should not be construed as a recommendation of any specific security. Investing in securities involves inherent risks, including the risk that you can lose the value of your investment. Any forecast, projection, or prediction of the market, the economy, economic trends, and fixed-income markets are based upon current opinion as of the date of issue and are also subject to change. Opinions and data presented are not necessarily indicative of future events or expected performance. Meeder Public Funds, Inc. cannot and does not claim to be able to accurately predict the future investment performance of any individual security or of any asset class. There is no assurance that the investment process will consistently lead to successful results. The investment return and principal value of an investment will fluctuate, thus an investor's shares, or units, when redeemed, may be worth more or less than their original cost.

**Meeder Investment
Management**

6125 Memorial Drive
Dublin, OH 43017
866.633.3371



MEEDER
PUBLIC FUNDS

MeederInvestment.com

FOR INFORMATIONAL PURPOSES ONLY. SEE IMPORTANT DISCLOSURES AT THE END OF THE PRESENTATION.

WARREN COUNTY INVESTMENT PORTFOLIO

6/30/2022

CUSIP Id	Asset Short Name	Maturity Date	Shares/Par	Federal Tax Cost Amt	% Yield	Weighted Yield	Days to Mat	Weighted Maturity
STAR - OH			76,040,294.08	76,040,294.08	1.150000000	0.186963693	1	0.1625771
31846V567	FIRST AM GOVT OB FD CL Z	7/1/2022						
31846V567	FIRST AM GOVT OB FD CL Z	7/1/2022	46,732.4200	46,732.42	1.296298000	0.000129521	1	9.992E-05
09659CGC6	BNP PARIBAS C P 7/12/22	7/12/2022	95,000.0000	95,000.00	1.296298000	0.000263296	1	0.0002031
89579NBW2	TRIAD BK C D 2.300% 7/19/22	7/19/2022	2,750,000.0000	2,746,124.79	0.190000000	0.001115551	12	0.0704559
898133ZH9	TRUMBULL CNTY OH 0.625% 7/21/22	7/21/2022	245,000.0000	245,000.00	2.299977000	0.001204773	19	0.0099526
63873KGS0	NATIXIS N Y BRH DISC C P 7/26/22	7/26/2022	1,750,000.0000	1,757,770.00	0.625025001	0.002348957	21	0.0789218
53948BGV5	LLOYDS BANK CORPORATE C P 7/29/22	7/29/2022	5,000,000.0000	4,987,250.00	0.510000000	0.005438097	26	0.2772363
556360CM5	MADEIRA OH 0.875% 8/10/22	8/10/2022	2,290,000.0000	2,285,414.28	0.270000000	0.001319302	29	0.1417028
63873KHK6	NATIXIS NY C P 8/19/22	8/19/2022	1,440,000.0000	1,449,230.40	0.875087509	0.002711469	41	0.127039
24422ETV1	JOHN DEERE MTN 2.150% 9/08/22	9/8/2022	5,150,000.0000	5,137,062.06	0.340000000	0.003734302	50	0.549162
89236TEC5	TOYOTA MOTOR MTN 2.150% 9/08/22	9/8/2022	3,000,000.0000	3,024,810.00	2.152798638	0.013922498	70	0.4527014
037833DL1	APPLE INC 1.700% 9/11/22	9/11/2022	2,406,000.0000	2,426,426.94	2.151140104	0.011159675	70	0.3631457
87270LAT0	TIAA FSB C D	9/14/2022	1,000,000.0000	999,830.00	1.702570882	0.003639544	73	0.1560503
05580ASH8	BMW BANK C D 1.850% 9/20/22	9/20/2022	129,000.0000	129,000.00	2.200044001	0.000606788	76	0.0209613
85023LAD9	SPRINGBORO OH SPL 0.750% 9/28/22	9/28/2022	247,000.0000	246,197.25	1.851184758	0.000974425	82	0.0431631
46513JAT8	ISRAEL ST 1.100% 10/01/22	10/1/2022	1,690,000.0000	1,699,261.20	0.753276754	0.002736720	90	0.3269778
09659CK72	BNP PARIBAS NEW YORK C P 10/07/22	10/7/2022	1,500,000.0000	1,500,000.00	1.104473116	0.003542110	93	0.2982565
13607FKB1	CANADIAN C P 10/11/22	10/11/2022	5,000,000.0000	4,981,761.11	0.490000000	0.005219088	99	1.0544688
54930LTR6	LUCAS CNTY OH 0.550% 10/14/22	10/14/2022	4,000,000.0000	3,983,805.55	0.550000000	0.004684643	103	0.8773058
09659KKM1	BNP PARIBAS FORTIS NEW C P 10/21/22	10/21/2022	4,350,000.0000	4,365,181.50	0.552636074	0.005157713	106	0.9892905
13607FKU9	CANADIAN IMPERIAL C P 10/28/22	10/28/2022	4,760,000.0000	4,736,612.53	0.660000000	0.006683862	113	1.1443581
06366HL13	BANK OF MONTREAL C P 11/01/22	11/1/2022	1,850,000.0000	1,838,900.00	0.800000000	0.003145312	120	0.4717968
227563BL6	1st NATIONAL BK CD 11/9/22	11/9/2022	1,090,000.0000	1,083,476.35	0.810000000	0.001876377	124	0.2872478
44353KAB2	CROSS RIV BK C D 1.850% 11/14/22	11/14/2022	2,000,000.0000	2,000,000.00	0.460000000	0.001966996	132	0.5644423
4497W1LV6	HUBER HEIGHTS OH 1.625% 11/15/22	11/15/2022	245,000.0000	244,877.50	1.852704949	0.000969998	137	0.0717274
935165AF7	ING U S FDG LLC DISC C P 11/29/22	11/29/2022	988,000.0000	1,000,715.56	1.630920240	0.003489466	138	0.2952605
9AMBDF8J5	WARREN CNTY OH PORT 3.630% 12/01/22	12/1/2022	4,000,000.0000	3,954,180.00	2.640000000	0.022319066	152	1.2850371
46640QM99	WARREN CNTY VPSA R18 4.600% 12/01/22	12/1/2022	170,000.0000	170,000.00	3.646885078	0.001325521	154	0.0559739
2254EBMP3	J P MORGAN SECURITIES C P 12/09/22	12/9/2022	14,109.0000	14,109.00	4.600000000	0.000138762	154	0.0046455
90331HPF4	CREDIT SUISSE AG C P 12/23/22	12/23/2022	10,000,000.0000	9,876,708.30	1.670000000	0.035265037	162	3.4209198
06406RAM9	US BANK NA MTN 1.950% 1/09/23	1/9/2023	3,100,000.0000	3,057,925.25	1.860000000	0.012160613	176	1.1506816
09659KPH7	BANK OF NY MTN 1.850% 1/27/23	1/27/2023	2,500,000.0000	2,509,575.00	1.960015680	0.010516600	193	1.0355549
89788JAB5	BNP PARIBAS FORTIS C P 2/17/23	2/17/2023	4,750,000.0000	4,751,757.50	1.862759905	0.018924604	211	2.1436426
3133ELUF9	TRUIST BANK MTN 1.250% 3/09/23	3/9/2023	1,350,000.0000	1,325,193.75	2.500000000	0.007083290	232	0.6573293
912828Q29	F F C B 0.790% 3/15/23	3/15/2023	9,350,000.0000	9,324,070.00	1.266464032	0.025247247	252	5.0236771
	U S TREASURY NT 1.500% 3/31/23	3/31/2023	4,000,000.0000	3,987,080.00	0.801924619	0.006836033	258	2.1993295
			247,000.0000	245,842.19	1.515687364	0.000796676	274	0.1440199

89236TJD8	TOYOTA MOTOR MTN	0.400%	4/06/23	4/6/2023	2,000,000.0000	2,001,780.00	0.407693170	0.001744879	280	1.1983675
12738RGA6	CADENCE BKN A C D	1.300%	4/17/23	4/17/2023	248,000.0000	247,380.00	1.313489538	0.000694715	291	0.1539123
33847E3B1	FLAGSTAR BK FSB C D	1.150%	5/01/23	5/1/2023	248,000.0000	247,442.00	1.164356516	0.000615992	305	0.1613574
48133DE71	JPMORGAN LLC MTN	2.500%	5/01/23	5/1/2023	3,000,000.0000	3,000,000.00	2.528803067	0.016220040	305	1.9563058
3137EAER6	F H L M C	0.375%	5/05/23	5/5/2023	3,000,000.0000	2,998,740.00	0.383251403	0.002457187	309	1.9811299
037833DV9	APPLE INC	0.750%	5/11/23	5/11/2023	3,000,000.0000	3,011,310.00	0.763257788	0.004914082	315	2.0280641
023135BV7	AMAZON COM INC	0.250%	5/12/23	5/12/2023	2,000,000.0000	2,001,300.00	0.255380875	0.001092738	316	1.352119
69353RFL7	PNC BANK NA MTN	3.500%	6/08/23	6/8/2023	2,388,000.0000	2,415,175.44	3.497132351	0.018058281	343	1.7711627
912828ZU7	U S TREASURY NT	0.250%	6/15/23	6/15/2023	4,500,000.0000	4,499,296.88	0.256502334	0.002467469	350	3.3668855
3133EKSNT7	F F C B DEB	1.770%	6/26/23	6/26/2023	675,000.0000	672,252.75	1.794422085	0.002579128	361	0.5188663
3134GVZE7	F H L M C M T N	0.400%	6/30/23	6/30/2023	3,000,000.0000	3,000,000.00	0.409815071	0.002628602	365	2.3411529
17330PNQ8	1st NATIONAL BK CD	7/20/23		7/20/2023	1,000,000.0000	1,000,000.00	0.500000000	0.001069020	385	0.8231451
75472RAD3	CITIGROUP GLOBAL MTN	3.800%	7/30/23	7/30/2023	2,000,000.0000	2,000,000.00	3.805327458	0.016271878	395	1.6890509
3137EAEV7	RAYMOND JAMES C D	1.950%	8/23/23	8/23/2023	247,000.0000	246,506.00	1.972705844	0.001039694	419	0.2208295
91282CCU3	F H L M C M T N	0.250%	8/24/23	8/24/2023	2,500,000.0000	2,497,450.00	0.258179114	0.001378585	420	2.2426512
14913R2F3	U S TREASURY NT	0.125%	8/31/23	8/31/2023	3,000,000.0000	2,994,843.75	0.129319263	0.000828043	427	2.7341208
31422BG53	CATERPILLAR FINL MTN	0.450%	9/14/23	9/14/2023	1,680,000.0000	1,676,606.40	0.464549696	0.001665248	441	1.5808307
46513JCT6	F A M C M T N	0.350%	9/29/23	9/29/2023	3,000,000.0000	2,997,600.00	0.361600132	0.002317490	456	2.9224977
3137EAAY1	ISRAEL ST	1.160%	10/01/23	10/1/2023	1,500,000.0000	1,500,000.00	1.187903862	0.003809677	458	1.4688329
3133EK3M6	F H L M C M T N	0.125%	10/16/23	10/16/2023	2,000,000.0000	1,992,540.00	0.129805396	0.000552988	473	2.0150408
912828T91	F F C B DEB	1.625%	10/23/23	10/23/2023	2,000,000.0000	1,998,080.00	1.655848457	0.007073740	480	2.0505472
3134GW6E1	U S TREASURY NT	1.625%	10/31/23	10/31/2023	2,000,000.0000	1,987,890.62	1.657774196	0.007045852	488	2.0740917
3134GXAY0	F H L M C M T N	0.320%	11/02/23	11/2/2023	2,000,000.0000	2,000,000.00	0.331705901	0.001418400	490	2.0952784
239876CR4	F H L M C M T N	0.300%	11/13/23	11/13/2023	2,000,000.0000	1,998,500.00	0.312832384	0.001336692	501	2.1407085
935165AG5	DAYTON OH SPL	0.631%	12/01/23	12/1/2023	875,000.0000	875,000.00	0.656389132	0.001227962	519	0.970937
9AMBDF8K2	WARREN CNTY OH	3.750%	12/01/23	12/1/2023	175,000.0000	175,000.00	3.814348052	0.001427164	519	0.1941874
9AMBDF913	WARREN CNTY VPSA R19	4.650%	12/01/23	12/1/2023	14,757.0000	14,757.00	4.650000000	0.000146712	519	0.016375
06406RAP2	WCPA TIF RACINO	3.200%	12/01/23	12/1/2023	635,000.0000	635,000.00	3.200000000	0.004344496	519	0.7046229
89236THU2	BANK NEW YORK MTN	0.350%	12/07/23	12/7/2023	2,000,000.0000	2,000,000.00	0.364082720	0.001556846	525	2.2449411
3133EMNG3	TOYOTA MOTOR MTN	0.450%	1/11/24	1/11/2024	1,000,000.0000	1,002,200.00	0.469243683	0.001005469	560	1.199936
91282CBM2	F F C B DEB	0.230	1/19/24	1/19/2024	1,575,000.0000	1,572,905.25	0.240264082	0.000807992	568	1.9101459
3134GWXC5	U S TREASURY NT	0.125%	2/15/24	2/15/2024	3,500,000.0000	3,483,730.47	0.131126217	0.000976674	595	4.4317695
91282CEG2	F H L M C	0.350%	3/29/24	3/29/2024	2,500,000.0000	2,498,750.00	0.368285369	0.001967537	638	3.4084673
3133EMWV0	U S TREASURY NT	2.250%	3/31/24	3/31/2024	3,975,000.0000	3,915,375.00	2.286167165	0.019138020	640	5.357584
91282CEK3	F F C B DEB	0.350%	4/22/24	4/22/2024	1,000,000.0000	1,000,000.00	0.366922464	0.000784495	662	1.4153819
023135BW5	U S TREASURY NT	2.500%	4/30/24	4/30/2024	4,000,000.0000	3,954,687.50	2.530851075	0.021399046	670	5.6650353
3130ANM49	AMAZON COM INC	0.450%	5/12/24	5/12/2024	2,000,000.0000	1,999,220.00	0.473788943	0.002025168	682	2.915148
3133EKQU3	F H L B DEB	0.400%	5/24/24	5/24/2024	3,000,000.0000	2,999,100.00	0.421096958	0.002700155	694	4.4500621
3130A8HK2	F F C B DEB	1.950%	6/13/24	6/13/2024	1,500,000.0000	1,498,290.00	1.991665645	0.006380107	714	2.2872295
91282CCG4	F H L B DEB	1.750%	6/14/24	6/14/2024	850,000.0000	847,977.00	1.800504141	0.003264328	715	1.2963007
89236TJH9	U S TREASURY NT	0.250%	6/15/24	6/15/2024	6,695,000.0000	6,654,043.56	0.264298552	0.003760071	716	10.18625
	TOYOTA MTR CR MTN	0.500%	6/18/24	6/18/2024	4,409,000.0000	4,391,364.00	0.530222694	0.004978212	719	6.7506249

3133ENZS2	F F C B DEB	3.100%	6/28/24	4,000,000.0000	3,998,560.00	3.108236828	0.026572558	729	6.2322777
3135G0V75	F N M A	1.750%	7/2/24	5,000,000.0000	4,992,495.00	1.799004893	0.019202848	733	7.8241517
3130AN6Y1	F H L B DEB	0.500%	7/26/24	2,500,000.0000	2,500,000.00	0.525734714	0.002810103	757	4.0462391
3133EKVV4	F F C B DEB	1.850%	7/26/24	1,250,000.0000	1,248,225.00	1.896366152	0.005060935	757	2.0202467
3130ANB33	F H L B DEB	0.500%	7/29/24	1,500,000.0000	1,500,000.00	0.525845296	0.001686417	760	2.4373646
15118RRH2	CELTIC BANK C D	1.88548%	8/30/24	249,000.0000	248,285.37	1.939812550	0.001029738	792	0.4204283
3133EL5S9	F F C B DEB	0.480%	9/03/24	4,250,000.0000	4,248,725.00	0.510953567	0.004641472	796	7.2308165
91282CCX7	U S TREASURY NT	0.375%	9/15/24	2,750,000.0000	2,744,628.91	0.398173710	0.002336533	808	4.7414442
3133EKP75	F F C B	1.600%	9/17/24	2,000,000.0000	1,996,000.00	1.652687683	0.007052888	810	3.4566961
3133ELEA8	F F C B DEB	1.700%	9/17/24	2,500,000.0000	2,497,300.00	1.752324407	0.009356230	810	4.3248534
3133EMBD3	F F C B DEB	0.360%	9/24/24	1,500,000.0000	1,498,125.00	0.383562228	0.001228569	817	2.6168917
3134GWU53	F H L M C M T N	0.400%	9/24/24	3,500,000.0000	3,499,825.00	0.425237867	0.003181954	817	6.1134172
91282YH7	U S TREASURY NT	1.500%	9/30/24	3,000,000.0000	2,971,875.00	1.555097090	0.009881064	823	5.2293297
3135G0W66	F N M A	1.625%	10/15/24	5,500,000.0000	5,490,355.00	1.683676113	0.019763990	838	9.8369416
3133EK3B0	F F C B DEB	1.500%	10/16/24	6,000,000.0000	5,989,788.54	1.555226078	0.019916851	839	10.744572
06406RAX5	BANK NEW YORK MTN	0.850%	10/25/24	3,345,000.0000	3,340,379.40	0.904495877	0.006459785	848	6.0562989
172254WM2	CINCINNATI OHIO	0.879%	11/01/24	390,000.0000	390,000.00	0.936720731	0.000781071	855	0.7129291
3133EK4Y9	F F C B DEB	1.650%	11/01/24	3,000,000.0000	2,983,560.00	1.706555241	0.010886061	855	5.4540177
3133EK6J0	F F C B DEB	1.625%	11/08/24	2,500,000.0000	2,498,075.00	1.682281692	0.008985036	862	4.6039266
3134GWL1	F H L M C M T N	0.500%	11/27/24	2,500,000.0000	2,500,000.00	0.532175320	0.002844529	881	4.7090312
856285RS2	STATE BANK OF C D	2.050%	11/27/24	247,000.0000	246,135.50	2.106777658	0.001108686	881	0.4636239
232285BM7	CUYAHOGA CNTY OH	0.589%	12/01/24	1,565,000.0000	1,565,000.00	0.630904689	0.002111027	885	2.9612377
531677PD8	LICKING HEIGHTS OH	0.880%	12/01/24	350,000.0000	350,000.00	0.935911344	0.000700355	885	0.6622576
935165AH3	WARREN CNTY OH PORT	3.880%	12/01/24	180,000.0000	180,000.00	3.971096964	0.001528265	885	0.3405896
9AMBDF8L0	WARREN CNTY VPSA R20	4.750%	12/01/24	15,444.0000	15,444.00	4.750000000	0.000156844	885	0.0292226
677581JB7	OHIO ST	0.520%	12/15/24	1,230,000.0000	1,230,000.00	0.558953467	0.001469929	899	2.3641795
3134GV7E2	F H L M C M T N	0.500%	1/27/25	2,000,000.0000	1,994,400.00	0.534742201	0.002280197	942	4.0167871
3133EMSJ2	F F C B DEB	0.430%	3/03/25	6,250,000.0000	6,222,600.00	0.462514790	0.006153372	977	12.998167
91282ZF0	U S TREASURY NT	0.500%	3/31/25	4,000,000.0000	3,986,718.75	0.537114620	0.004578236	1005	8.5663795
3133EMUP5	F F C B DEB	0.710%	4/01/25	3,000,000.0000	3,000,000.00	0.763424442	0.004896694	1006	6.4526021
3130AN7M6	F H L B DEB	0.625%	4/21/25	3,000,000.0000	2,998,500.00	0.671220225	0.004303133	1026	6.577594
3135G03U5	F N M A DEB	0.625%	4/22/25	5,000,000.0000	4,991,250.00	0.671076084	0.007161380	1027	10.959618
3130ANAY6	F H L B DEB	0.700%	4/29/25	1,830,000.0000	1,830,000.00	0.751411580	0.002939982	1034	4.0456404
3133EMYN6	F F C B DEB	0.710%	5/06/25	1,620,000.0000	1,620,000.00	0.760505147	0.002634103	1041	3.605632
3133ELC28	F F C B DEB	0.730%	5/27/25	2,000,000.0000	1,997,500.00	0.786095796	0.003357205	1062	4.5355186
3133ELH23	F F C B DEB	0.500%	6/09/25	3,000,000.0000	2,994,690.00	0.540079284	0.003458000	1075	6.8829717
7954506N0	SALLIE MAE BANK C D	0.800%	6/10/25	249,000.0000	247,755.00	0.858756092	0.000454892	1076	0.5699678
88241THU7	TEXAS EXCHANGE C	0.9863%	6/19/25	249,000.0000	248,004.00	1.053390864	0.000558552	1085	0.5753128
3133EMU34	F F C B DEB	0.680%	7/21/25	1,250,000.0000	1,250,000.00	0.734396769	0.001962711	1117	2.9852371
911759KU1	U S DEPT HSG & URB	4.130%	8/01/25	420,000.0000	422,826.18	4.101453881	0.003707792	1128	1.0197333
3136G4H71	F N M A	0.500%	8/18/25	1,000,000.0000	993,390.00	0.543679186	0.001154724	1145	2.4318732
3136G4J53	F N M A	0.600%	8/18/25	2,000,000.0000	1,995,100.00	0.655136268	0.002794550	1145	4.8841141

3136G4J95	F N M A	0.550%	8/25/25	8/25/2025	2,000,000.0000	1,997,500.00	0.596723446	0.002548447	1152	4.9198846
3136G4W41	F N M A	0.650%	8/25/25	8/25/2025	2,500,000.0000	2,501,175.00	0.708369660	0.003788085	1152	6.1604468
3136G4X40	F N M A	0.600%	8/26/25	8/26/2025	1,585,000.0000	1,585,000.00	0.649807765	0.002202063	1153	3.9072772
3136G4H89	F N M A	0.600%	8/27/25	8/27/2025	1,000,000.0000	996,420.00	0.649857031	0.001384446	1154	2.4584642
3137EAEX3	F H L M C M T N	0.375%	9/23/25	9/23/2025	5,000,000.0000	4,924,900.00	0.410109472	0.004318301	1181	12.435492
46513JET4	ISRAEL ST	1.420%	10/01/25	10/1/2025	2,000,000.0000	2,000,000.00	1.535982001	0.006567979	1189	5.0842571
3134GWZV1	F H L M C M T N	0.650%	10/22/25	10/22/2025	590,000.0000	581,740.00	0.707136641	0.000879524	1210	1.5049773
3134GW5P7	F H L M C M T N	0.600%	10/27/25	10/27/2025	1,500,000.0000	1,499,325.00	0.656311529	0.002103882	1215	3.8948229
3136G45C3	F N M A	0.540%	10/27/25	10/27/2025	2,000,000.0000	1,998,000.00	0.588555858	0.002514194	1215	5.1902397
3134GW4B9	F H L M C M T N	0.500%	10/29/25	10/29/2025	2,500,000.0000	2,495,000.00	0.548642658	0.002926684	1217	6.4919741
3135G06G3	F N M A	0.500%	11/07/25	11/7/2025	2,000,000.0000	1,994,960.00	0.546645238	0.002331607	1226	5.2292609
935163AY1	WARREN CNTY OH	2.282%	12/01/25	12/1/2025	2,890,000.0000	2,890,000.00	2.483404070	0.015344788	1250	7.7236664
935165AJ9	WARREN CNTY OH PORT	3.980%	12/01/25	12/1/2025	190,000.0000	190,000.00	4.107623874	0.001668630	1250	0.5077843
9AMBDF8M8	WARREN CNTY UTICA RD	4.400%	12/01/25	12/1/2025	18,136.0000	18,136.00	4.400000000	0.000170612	1250	0.0484693
9AMBDF8N6	WARREN CNTY SHAKER	4.400%	12/01/25	12/1/2025	1,480.0000	1,480.00	4.400000000	0.000013923	1250	0.0039554
9AMBDJN01	WARREN COUNTY, OHIO	2.200%	12/01/25	12/1/2025	1,302,000.0000	1,302,000.00	2.200000000	0.006124199	1250	3.4796587
3134GXFV1	F H L M C M T N	0.625%	12/17/25	12/17/2025	3,000,000.0000	2,998,500.00	0.686413408	0.004400535	1266	8.1162125
3134GXGZ1	F H L M C M T N	0.550%	12/30/25	12/30/2025	1,000,000.0000	1,000,000.00	0.602852038	0.001288921	1279	2.7345521
3135G06Q1	F N M A	0.640%	12/30/25	12/30/2025	2,000,000.0000	2,002,600.00	0.706269243	0.003023989	1279	5.4762139
91282CBC4	U S TREASURY NT	0.375%	12/31/25	12/31/2025	2,200,000.0000	2,136,664.06	0.412355263	0.001883751	1280	5.8473874
31422B6K1	F A M C M T N	0.480%	1/15/26	1/15/2026	1,500,000.0000	1,498,500.00	0.526944582	0.001688255	1295	4.1489879
3130AKQM1	F H L B DEB	0.300%	1/27/26	1/27/2026	7,200,000.0000	7,118,568.00	0.325083438	0.004947697	1307	19.8922248
3135G06R9	F N M A	0.550%	1/28/26	1/28/2026	2,500,000.0000	2,500,000.00	0.602838823	0.003222232	1308	6.991388
3130AKV37	F H L B DEB	0.530%	2/04/26	2/4/2026	3,205,000.0000	3,169,745.00	0.578394247	0.003919800	1315	8.9118061
3130AKXB7	F H L B DEB	0.580%	2/11/26	2/11/2026	2,000,000.0000	1,992,000.00	0.640346229	0.002727218	1322	5.6303636
199098DK7	COLUMBUS FRANKLIN OH	1.501%	2/15/26	2/15/2026	1,035,000.0000	1,067,726.70	1.620827799	0.003700093	1326	3.0270478
3133EMQX3	F F C B DEB	0.590%	2/17/26	2/17/2026	2,500,000.0000	2,490,225.00	0.652690967	0.003475056	1328	7.0705356
3130AKVV5	F H L B DEB	0.500%	2/18/26	2/18/2026	3,000,000.0000	3,000,000.00	0.548925752	0.003520874	1329	8.524362
3130AL6C3	F H L B DEB	0.250%	2/18/26	2/18/2026	1,000,000.0000	980,000.00	0.273388376	0.000572825	1329	2.7846249
3133EMUK6	F F C B DEB	1.050%	3/25/26	3/25/2026	2,750,000.0000	2,750,000.00	1.128474088	0.006634985	1364	8.0197848
91282CCJ8	U S TREASURY NT	0.875%	6/30/26	6/30/2026	4,500,000.0000	4,487,167.97	0.954812802	0.009160226	1461	14.016455
3130AN3Y4	F H L B DEB	1.100%	7/13/26	7/13/2026	5,000,000.0000	5,000,000.00	1.189292047	0.012713765	1474	15.757348
3130ANAD2	F H L B DEB	1.000%	7/29/26	7/29/2026	3,750,000.0000	3,750,000.00	1.093948278	0.008770891	1490	11.946294
91282CCP4	U S TREASURY NT	0.625%	7/31/26	7/31/2026	3,500,000.0000	3,450,234.38	0.690188283	0.005091337	1492	11.00609
91282CCW9	U S TREASURY NT	0.750%	8/31/26	8/31/2026	2,830,000.0000	2,817,176.56	0.825454826	0.004971907	1523	9.173385
3133EM6E7	F F C B DEB	0.940%	9/28/26	9/28/2026	2,150,000.0000	2,143,550.00	1.039397592	0.004763553	1551	7.1082234
3130AP3E3	F H L B DEB	0.820%	9/30/26	9/30/2026	1,200,000.0000	1,192,800.00	0.897508866	0.002288875	1553	3.960543
91282CCZ2	U S TREASURY NT	0.875%	9/30/26	9/30/2026	3,500,000.0000	3,478,535.16	0.959356190	0.007134966	1553	11.55004
3130APB87	F H L B DEB	1.100%	10/13/26	10/13/2026	3,250,000.0000	3,244,800.00	1.213284361	0.008417172	1566	10.86414
91282CDK4	U S TREASURY NT	1.250%	11/30/26	11/30/2026	1,850,000.0000	1,853,685.53	1.351979839	0.005358237	1614	6.3966891
172311RM6	CINCINNATI OH	1.200%	12/01/26	12/1/2026	545,000.0000	545,000.00	1.318521937	0.001536383	1615	1.8818486
935165AK6	WARREN CNTY OH	4.080%	12/01/26	12/1/2026	200,000.0000	200,000.00	4.230171073	0.001808854	1615	0.6905866

172253FN1	CINCINNATI OH CITY	1.471%	12/15/26	12/15/2026	1,490,000.0000	1,490,000.00	1.627302395	0.005184062	1629	5.18947
3130ALED2	F H L B DEB	1.020%	2/24/27	2/24/2027	4,000,000.0000	3,593,040.00	1.133660835	0.008708851	1700	13.059502
91282CEW7	U S TREASURY NT	3.000%	6/30/27	6/30/2027	4,750,000.0000	4,746,289.06	2.976751570	0.030207336	1826	18.529795
935165AL4	WARREN CNTY OH	4.210%	12/01/27	12/1/2027	205,000.0000	205,000.00	4.357952487	0.001910082	1980	0.8678301
9AMBDFML4	WARREN CO SPEC OB RV	2.570%	12/01/27	12/1/2027	895,000.0000	895,000.00	2.570000000	0.004917811	1980	3.7888191
199492R92	COLUMBUS OH	1.215%	4/01/28	4/1/2028	500,000.0000	500,000.00	1.390557940	0.001486534	2102	2.2470791
9141193T7	UNIVERSITY OH	1.598%	6/01/28	6/1/2028	1,000,000.0000	1,000,000.00	1.800502518	0.003849545	2163	4.6245786
935165AM2	WARREN CNTY OH	4.310%	12/01/28	12/1/2028	215,000.0000	215,000.00	4.454181867	0.002047491	2346	1.0784056
9AMBDFMK6	WARREN CO SPEC OB RV	2.570%	12/01/28	12/1/2028	1,465,000.0000	1,465,000.00	2.570000000	0.008049824	2346	7.3482053
935163AX3	WARREN CNTY OH PORT	2.390%	12/01/29	12/1/2029	1,575,000.0000	1,575,000.00	2.390000000	0.008048114	2711	9.1290529
9AMBDFNN9	WCPA MIDDLETOWN PACE	3.090%	12/01/29	12/1/2029	310,000.0000	310,000.00	3.090000000	0.002048028	2711	1.7968295
9AMBDK342	WARREN COUNTY BLP	3.030%	6/01/31	6/1/2031	684,000.0000	684,000.00	3.030000000	0.004431129	3258	4.7645603
9AMBDF8Q9	WARREN CNTY BELLBROO	4.500%	12/01/33	12/1/2033	218,011.0000	218,011.00	4.500000000	0.002097522	4172	1.9446362
9AMBDF8Z9	WARREN COUNTY	6.500%	12/01/35	12/1/2035	1,690,000.0000	1,690,000.00	6.500000000	0.023486360	4902	17.712329
9AMBDF8T3	WARREN CNTY OLD 122	4.000%	12/01/36	12/1/2036	301,704.0000	301,704.00	4.000000000	0.002580220	5268	3.3981495
9AMBDF8W6	WARREN COUNTY	4.625%	12/01/36	12/1/2036	17,432.0000	17,432.00	4.625000000	0.000172375	5268	0.1963399
9AMBDF8U0	WARREN CNTY IRWIN-SI	4.210%	12/01/37	12/1/2037	111,912.3600	111,912.36	4.210000000	0.001007339	5633	1.3478248
9AMBDFZ71	COUNTY OF WARREN	2.300%	12/01/39	12/1/2039	573,000.0000	573,000.00	2.300000000	0.002817722	6363	7.7952885

467,718,286.56

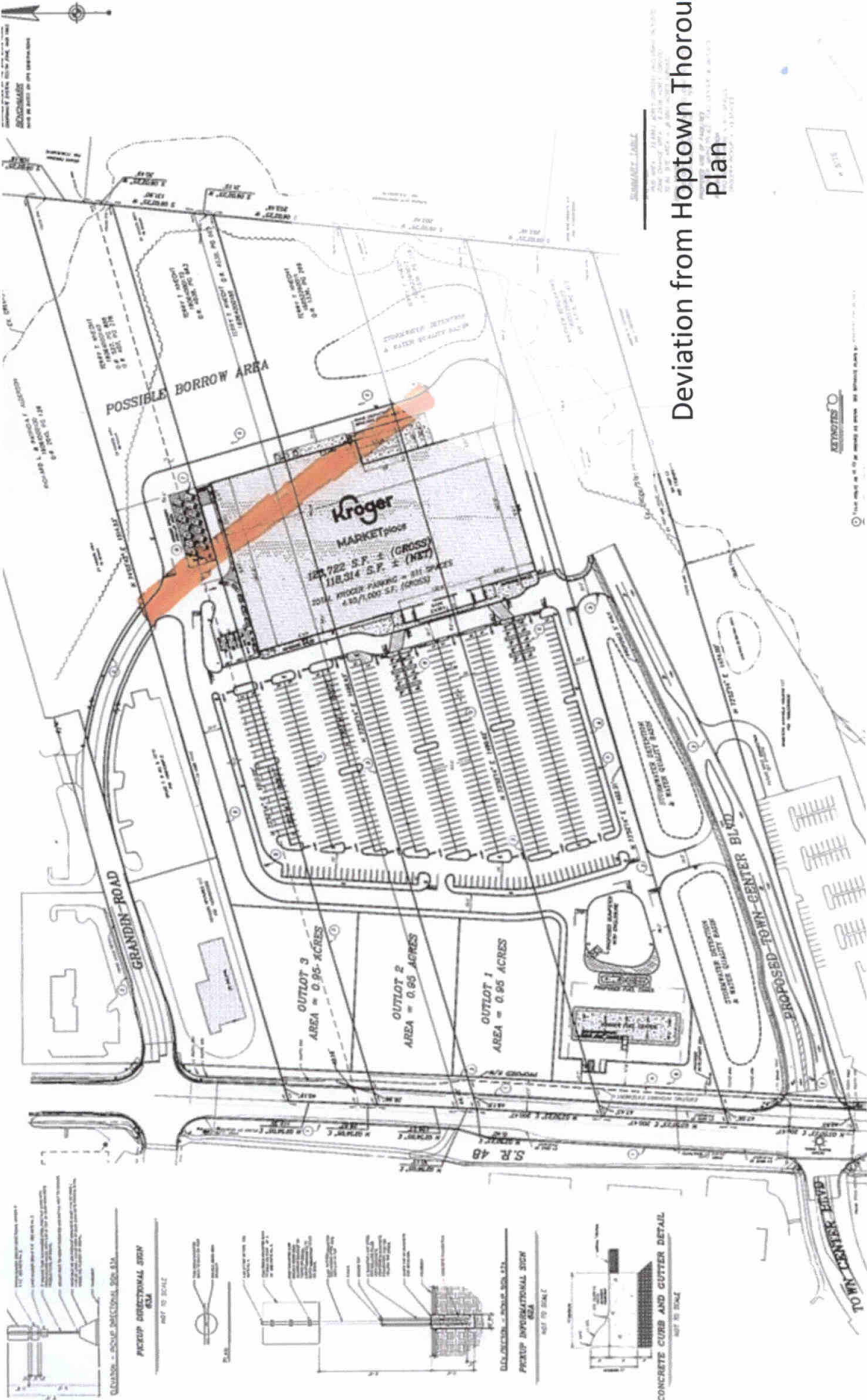
1.100897869

684.37388

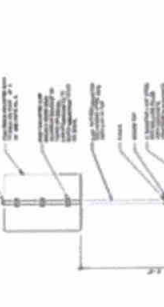
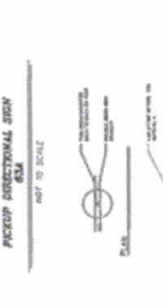
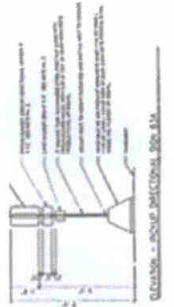
1.8749969

5 SHEETS
 853 Commerce Blvd
 Council Bluffs, IA 51503
 Phone: 712.325.1234
 Fax: 712.325.1235
 Date: MAY 22, 2022
 Title: S.R. 48
 Job No.: 2022-001
 Designer: [Signature]
 Checker: [Signature]
 Engineer: [Signature]

PRELIMINARY LAYOUT PLAN
 THIS PLAN IS PRELIMINARY AND SUBJECT TO CHANGE WITHOUT NOTICE
 THE USER SHALL BE RESPONSIBLE FOR VERIFYING ALL INFORMATION AND DATA
 SHOWN ON THIS PLAN AND FOR OBTAINING ALL NECESSARY PERMITS
 FROM THE APPROPRIATE AGENCIES AND AGENCIES.



Deviation from Hoptown Thoroughfare Plan



REVISIONS
 1. THIS SHEET IS TO BE REVISED AS SHOWN ON THIS SHEET.

Area of concern with traffic congestion



THE DEVELOPER SHALL PROVIDE CATCH BASIN TO CREATE INTERIOR TRAP IN A MANNER SHOWN IN ORDER TO MEET THE STATE HIGHWAY, WHILE PROVIDING ACCESS TO EACH SITE. ADDITIONAL EROSION EASEMENTS MAY BE REQUIRED AT THE REVIEW OFFICE.

ACCESS POINTS ONTO THE PROPOSED (ALL NON-STATE HIGHWAYS) SHALL BE ON TURN LANE ANALYSIS AND EXISTING PROPOSED APPROVED DRIVEWAY LOCATED ON THE SITE PLAN AND SUBMITTED.

